

MOG LOG



JULY 2021

The only car club in the area devoted to a car currently built by Britons, for a manufacturer owned and managed partially by Britons.....THE British car club!

PRESIDENT
EDITOR
TREASURER
MEMBERSHIP CHRMN.

Judi Boyles
8422 Garland Road
Dallas, TX. 75218-4333
214/321-1648

secretarytexmog@att.net

WEB ADDRESS:

www.TEXMOG.COM

MORGAN MOTOR CAR CLUB

REGALIA
Jeff Smith
2720 Wexford
Plano, TX. 75093
jsmith6844@gmail.com

HISTORIAN
Bill Boyles
8422 Garland Road
Dallas, TX. 75218-4333
214/321-1648

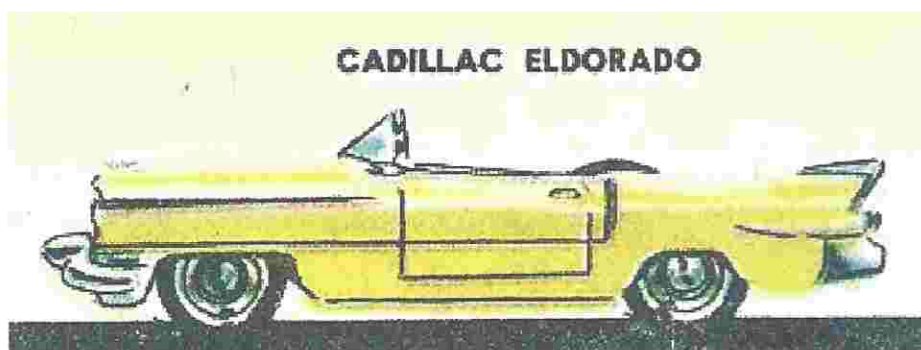
wmj3@att.net



To steal ideas from
one person is
plagiarism, to steal
from many is
research.

In reviewing all the
comfort options available
for 2022 Morgans, you
might as well buy a
Cadillac.

CADILLAC ELDORADO



RUNNING On.....

to the Back Country BBQ and our first dinner meeting since March 2020.

We visited the restaurant this past Thursday and find it all as usual, with the exception of no corn on the cob, no draft beer, and not an overwhelming number of eat in customers which is fine with us. So it is hoped you will join us there on July 8th for dinner and catching up with each other's news. We wore masks, but it is optional if you are vaccinated.

Huzzah! Brits in the Ozarks has finally gotten a date out of September. An October date for the event is almost doable for the drive to Arkansas.

Check the Calendar for goings on in June, July, September, and October.

Have you sent Bill Beecher, webmaster, (bill_beecher@flash.net) photos of your Morgans to show on the website, he would appreciate it? No names or address will be posted!

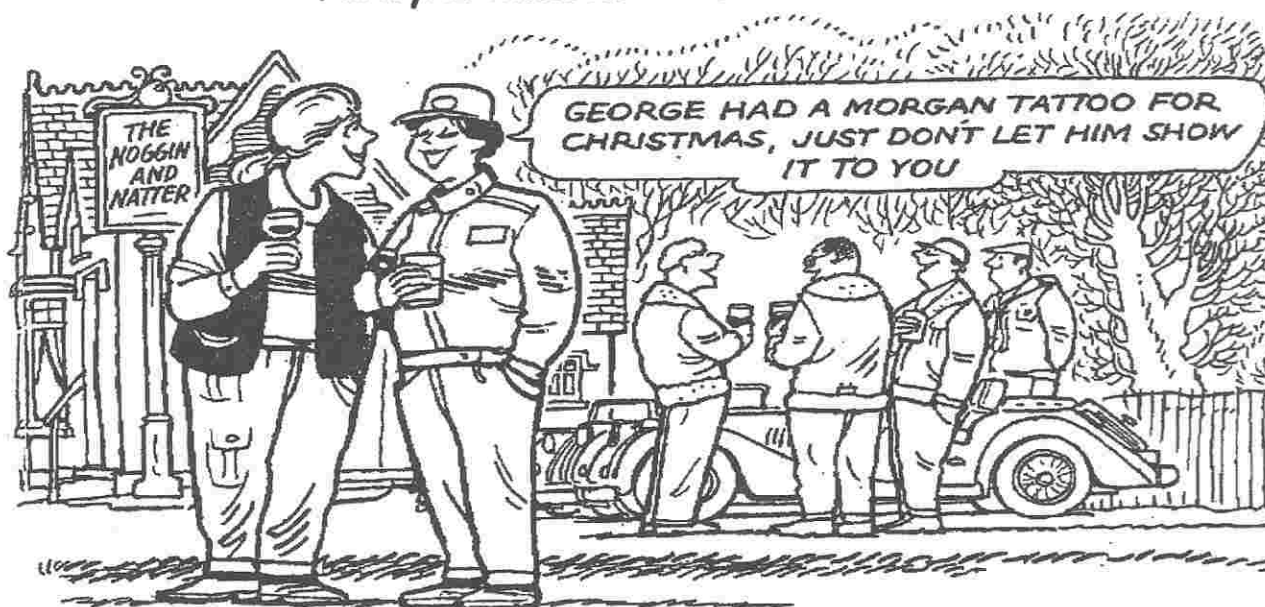
See you Thursday, July 8th at Back Country BBQ.



the Prez



MORGANS...ROAD CANDY



Will You Still Teach Your Kids to Drive a Manual?

Or will they teach their kids?

Manual transmissions could survive into the EV era in some form, but it won't quite be the same thing.

Even before the first electric cars arrived on sale, it was entirely possible to go through life without learning how to drive a car with a manual transmission. Odds were, even if your family was "into" cars on some level, there weren't a great many incentives to learn how to drive a stick even 40 years ago unless you made a point to do so. If all the cars in your family were automatics and your first car was as well, manuals were something you had to actively seek out, because the Big Three were not generous with manual transmissions save for a few gas misers, bare-bones trucks and pricey performance cars. (And even then, one could have a Corvette or a Mustang in the family while growing up, and they could all be automatics, too).

For many Americans for the past 40 years or so, manual transmissions seemed to be an "optional" item they either learned early on, didn't learn at all, or learned much later in life out of curiosity. Either one of your parents taught you how to drive a manual, you learned it yourself or with the help of a driving course or a high school friend with a car, or perhaps you learned it on your own quite a few years after you started driving.

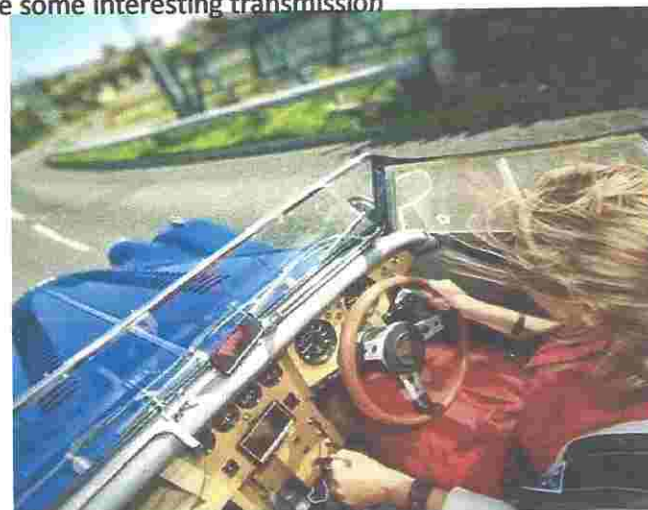
The EV age we are now entering does not exactly promise to create new incentives to learn to drive a stick, creating the feeling that in about a generation the skill will be something of a lost art—like using a manual typewriter. For a while, the various EV start-ups appeared to hype the idea that even driving by humans will become optional within a few years, just as the mirage of fully autonomous driving beckoned on the horizon. Thankfully, we're past that embarrassing period about five years ago when podcast hosts would openly wonder if their teenage kids would ever need a driver's license at all since the robotaxi utopia was just around the corner.

However, as a number of EV manufacturers have demonstrated, it is possible to pair a manual transmission with an electric motor. Opel's recent reworking of the Manta featured a four-speed manual transmission, so it's by no means a technical impossibility to integrate either a shift-by-wire system and a clutch to simulate a manual transmission, or actually have a multi-speed EV that uses gears that can be selected manually.

In a few years, as more sports cars go electric, we're bound to see some interesting transmission options, as well as systems that emulate them.

BY JAY RAMEY

JUN 22, 2021



MMCC CALENDAR OF EVENTS

NOTE: New entries and revisions are in italic type
Entries in bold type are official MMCC events

**Check the Calendar entries often for changes of dates, events
and other alterations or updates**

2021 Help to fill in the blanks, send info to: secretarytexmog@att.net

July 8 **After 16 months of no meetings, let's have a dinner at the**
Thurs. **Back Country BBQ /see you there between 6:30 and 7pm.**

Aug. **??**

Sept. 27-29 *Texas All British Car Days is a 3 day event being held from Centennial*
Fri.-Sun. *Plaza in Round Rock, Texas, USA.*

Oct. 7-9 *Brits in the Ozarks 2021 – Arkansas*

FIRST EVENT FIRST EVENT FIRST EVENT FIRST EVENT FIRST EVENT
2021

JUNE 12TH - FLAG POLE HILL

The Boyles (in Sophie, not in photos), the Harris-Simmons, the Smiths, and
Craig Ligon got together for the 1st MMCC event since Boxing Day 2020.

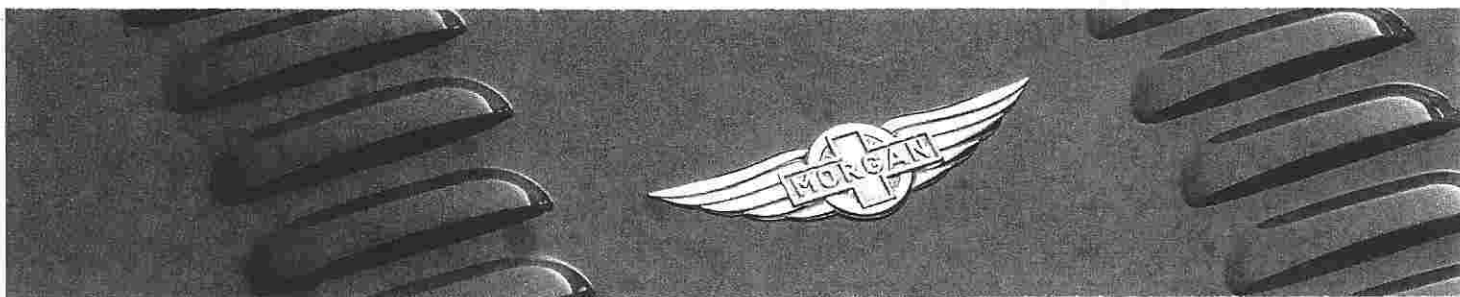


Chuck and Barbara toting their
chairs and picnic lunch.



Jeff Smith, Craig Ligon, and Yvonne
Smith enjoying the day.

...wings 'n THINGS - MY22



Morgan's four-wheeled range receives host of customer-focussed updates, enhanced comfort, useability, aesthetics, and acoustic character

The Morgan Motor Company continues its program of customer focused vehicle enhancement with a host of upgrades for its Plus Four and Plus Six models.

The updates come collectively as part of Morgan's **Model Year '22 (MY22)** package, in the company's move to a cyclical product enhancement programme. The MY22 update comes following feedback from customers and press alike, and reflects Morgan's desire to evolve its product and provide tangible customer benefit. It furthermore provides renewed purchase motivation, as part of the company's wider long-term product strategy.

An **all-new hood design** leads the MY22 update package, and is designed to improve usability, weather protection, and refinement. This has been achieved through a revisited frame structure that eliminates the requirement for hood and rail fasteners, and a vastly enhanced seal package around door and side-screen closures. Together, these changes bring a marked improvement in speed and ease of hood operation, cabin noise insulation, and weather protection.

The MY22 update sees the first usage of Morgan's redesigned **'wings badge'** on a vehicle. The iconic logo has received its first update in more than a decade, and the change comes as part of Morgan's wider brand identity refresh. The badge was designed in-house and is an example of the company's new level of digital craftsmanship that sits perfectly alongside its famed array of traditional coachbuilding skills. The new badge is complemented by a lower intake mesh that can now be specified with a black finish to match the optional black upper grill mesh.

The engine sound and character is core to the Morgan driving experience, and now customers will be able to enjoy the unrestrained sound of their *Plus Four* or *Plus Six* while out on the open road, but with the option of a more subtle acoustic profile in urban environments, thanks to the optional **Active Sports Exhaust System**. Featuring active bypass valves, the full character of the engine is released when driving in **Sport** mode (automatic models) and **Sport Plus** modes. It comes with a choice of polished silver or black tailpipes.

Inside the car, an **all-new seat** improves comfort, as well as driver confidence during dynamic driving. This has been achieved through reprofiled ergonomic seat padding in the base and backrest, as well as enhanced lateral and longitudinal support. It comes in two forms: the **Comfort** seat, which comes as standard on the *Morgan Plus Four*, and features adjustable lumbar support, and the **Comfort Plus**, which is fitted as standard to the *Morgan Plus Six* - and is available optionally on the *Plus Four* - and features increased elasticity in the seat base along with additional pneumatic adjustment to the side and thigh bolsters.

A new **lockable storage compartment** is now available as an option on both the *Plus Four* and *Plus Six*. Fitted to the rear of the luggage compartment, it provides secure stowage for valuable items when the car is left unattended, with no impact on the existing storage capacity or occupant space.

Additional **interior lighting** is provided by the standard fitment of a pair of LED lights to the rear bulkhead, a further useable enhancement to the MY22 models. A concierge function has been incorporated into the headlights, too, keeping them illuminated for 30 seconds after the key has been removed from the ignition.

The addition of a dual USB port outlet as standard represents a further passenger convenience feature, and when combined with existing **Bluetooth** audio connectivity facilitate seamless mobile device integration for navigation and in-car entertainment.

Steve Morris, Chairman and CEO of Morgan Motor Company, said: *"For 112 years Morgan has listened to its customers, offering a bespoke service that has made it famous the world over. Today, that's as much the case as it ever was. and feedback on the Plus Four and Plus Six, which were launched in 2020 and 2019 respectively, has been carefully collected and acted on by our engineering team."*

"The result of this engineering programme is the MY22 update package, which holistically brings new levels of useability, refinement and driving enjoyment to the four-wheeled range. The introduction of a cyclical structure to product improvement also demonstrates the progress the company has made in recent years and its new levels of commercial maturity."

...notes 'n BOLTS

trash and treasures from the IN BASKET of the RR - please add to the pile if you wish

DECEMBER 2020

'Boris the Red' pitches a mean, green curve ball...

British PM Boris Johnson head of the right-of-center Conservative Party announced a 'green industrial revolution' that would address climate and pandemic-related concerns. Targeted in the plan is a **ban on new sales of petrol and diesel cars** to start in 2030, five years earlier than previously proposed (2035) and ten years prior to original target (2045).

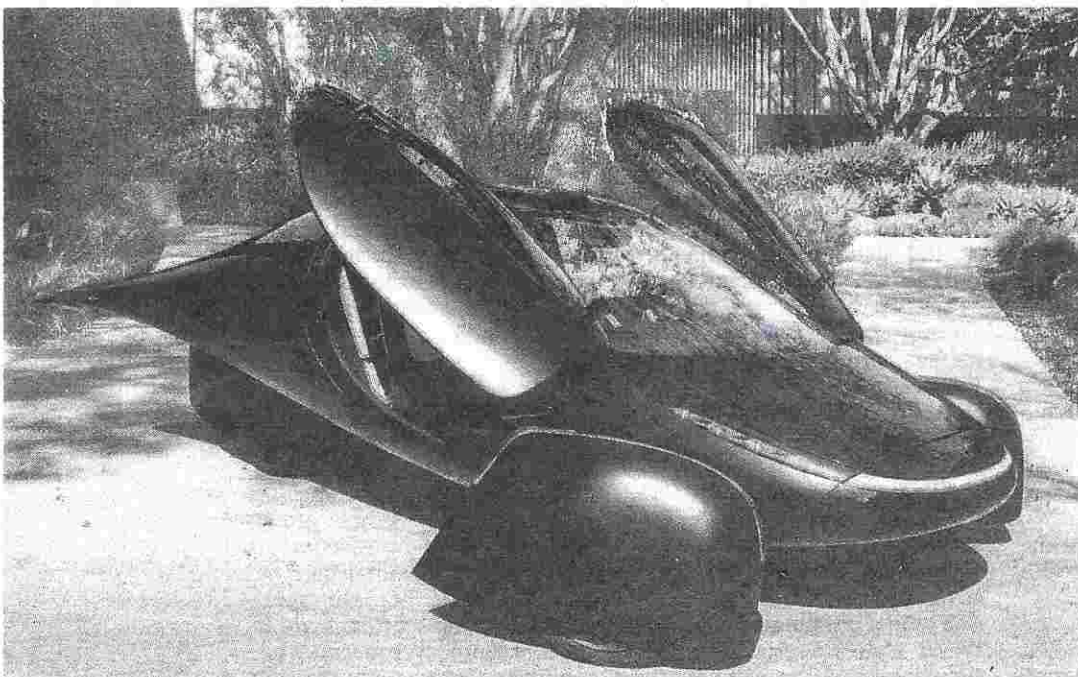
This target mimics several EU members with plans to eliminate gas and diesel vehicles from their roads, Norway 2025; Ireland, Sweden, Slovenia, Netherlands 2030; France, Spain 2040. Many intend to accomplish this by banning the registration or sale of new vehicles fitted with internal combustion engines. Other EU members have similar dates but legal challenges have them in a muddle.

Not to be targeted as laggards, a baker's dozen of US states have proposed similar restrictions on combustion-powered vehicles. How this bodes for the speciality vehicle manufacture such as Morgan, Lotus, and others is a big question mark. Not to mention the GMs and ASIANS manufactures.

Read the fine print for the next five years.

FEBRUARY 2021 - DAN DIEGO CA

HOPE SHINES WITH THE SUN



Aptera a three-wheel, ultra-aerodynamic vehicle covered with 34 square feet of solar cells



Aptera Motors is rolling out the first mass produced solar car this year. It is so efficient that on a clear day the 34 square feet of solar cells could provide enough energy to drive 40 miles. With a 15 minute plug-in charge, the trike has a 150 mile range.

The Aptera must undergo DoT safety tests before distribution, but when announced in Dec '20 the total 2021 production of 330 trikes sold out in 24 hours. 7500 buyers have put deposits on future production.

As pictured Aptera is a two seat, trunk space behind cabin, clam shell doors, 6-60 in 3.5 seconds, 110 mph top. Cost \$25,900.

One Aptera is going to a chap in London, wonder if a trip to the Midlands is planned ?.

Morgan in China



Xin Tian Di is on the city centre side of the French Concession where the big important restored diplomatic villas are found. In Xin Tian Di is the French School where Mao formed the Communist Party of China, which is now a popular tourist museum.

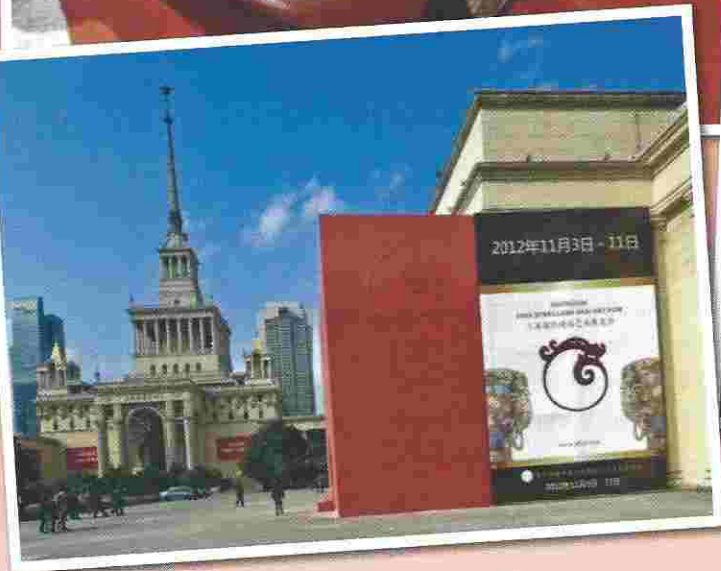
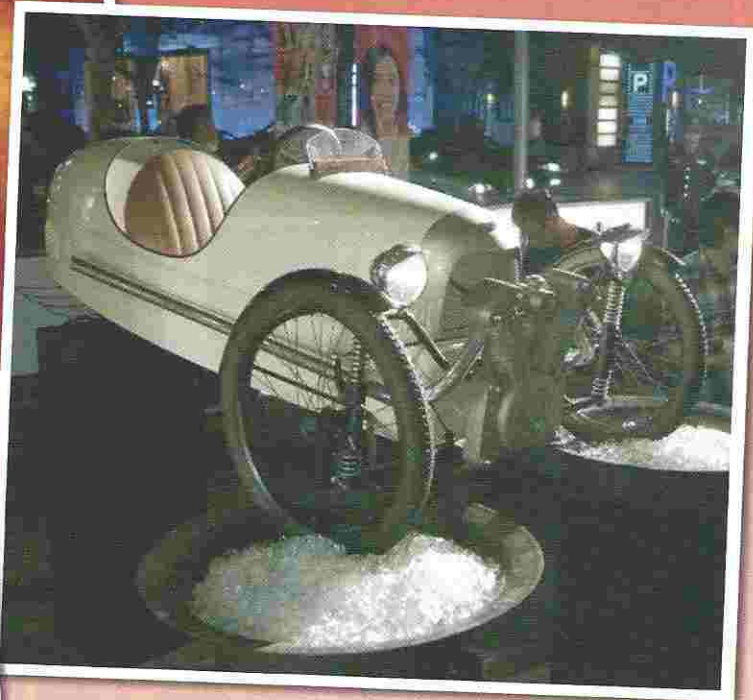
Shanghai is one of the biggest cities in the world with a population around 30 million. From 1949 China has been a communist country but now State Capitalism encourages growth above all and China's GDP growing at around 5% per year. All property is held by individuals on a long lease from government but this does not seem to impede development and Shanghai is about to be home to biggest Disneyland in the world and a new Dreamworks entertainment centre. This will be a huge complex by the side of the Yangtze river designed by Geoffrey Katzenberg where you can star in your own version of Shrek or Toy Story.

The Morgan car dealership is in centre of the city in an area called Xin Tian Di. This is a conversion of traditional buildings into cafes and restaurants and some expensive boutiques. It is a very popular area and is a bit like Soho in London. It is one of the only areas of Shanghai with a sense of human scale. Otherwise the city seems to be all high rise and shopping malls.



On the 28th October the Morgan LMP2 car competed in the World Endurance Championship at the Shanghai International Race Circuit. The car achieved a podium finish at the well attended sports car race, which was broadcast live throughout China.





The Morgan Aero Coupe is the first car to appear at the prestigious annual Fine art and Jewellery Fair at the International Exhibition Centre in the centre of Shanghai. The potential market for Morgan is huge in China. There are now at least 13 cities, all bigger than Birmingham. It is the right time and the right product for an emerging sophisticated Chinese customer who appreciates the craftsmanship and skill that creates a product out of high quality materials. The long history and heritage of Morgan contributes to the appeal. Morgan cars website is now in Mandarin and there is a second dealer opening shortly in Beijing. Morgan Motor Co.



Morgan Motors

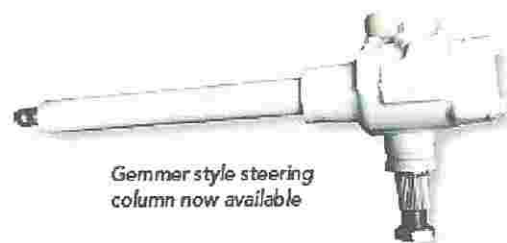
OF NEW ENGLAND



LARGEST MORGAN PARTS SUPPLIER IN THE U.S.

For Everything Morgan

- Factory Authorized Dealer
- Largest inventory of Morgan parts and accessories outside the UK
- Service, repairs and upgrades
- Award-winning restorations
- Complete mechanical rebuilding
- Specialists in cars 1950 to current
- Buy, sell or trade a Morgan
- The best technical service anywhere
- Visit our comprehensive website
- Family-owned and operated
- Worldwide shipping
- Exclusive on-line parts catalog



Gemmer style steering column now available

Our illustrated parts catalog available free online



morgan-spares.com • morganspares@fairpoint.net • Parts (888) 345-6647 • Tech (518) 329-3877

SIGNS FOUND ON BACKROADS OF TEXAS!

Please do not enter the dangerous area beyond this gate! You quite possibly will get hurt, then you will sue, then a protracted court battle will ensue exhausting your financial resources and you will lose because this sign that warned you will be

"Exhibit 1".



Connections, Horseshoes and Headlights!

By Mark Childers; *The Tidewater MG Classics*

Remember the old PBS show "Connections" hosted by James Burke? Over a period of ten years, he produced forty episodes that demonstrated how seemingly unrelated and innocuous events, often hundreds of years apart, conspired to change the course of human events.

In this forty-first presentation, with or without Mr. Burke's tacit approval, we'll explore the connection that inextricably links a sporty red MGB's brush with a ditch to the unique use of the horseshoe and a clever York miner's invention that literally changed the world overnight. Approval for journalist licenser pending and in spite of what you may have read in the past, bear with me.

"Wow, what's that?" blew through my mind as the shadowy shape of something in the road ahead never quite came into view. And with both right side wheels way up on the berm, I missed whatever it was. How nice it would be, I thought years ago, to have night vision in a LBC. Or even headlights tending at least one shade more towards the blue spectrum than yellow-brown. Short of designing a BMW-style projector system to fit in those little seven-inch holes, there are a few things that can be done to improve not only the headlights, but all of the electrics in any LBC.

But first, a short history lesson in how the 'connection' was made. In 1827, Georg Ohm, a high school teacher with a self-learned flair for the study of the newfangled notion of electricity, was shooting the breeze with the local blacksmith who was fabricating a horseshoe. Georg picked it up, flipped it up and exclaimed, "Mein Gott, dat's hot!" And in that very instant, he not only understood the relationship between Voltage, Resistance and Current, but that of Current and Heat as well. The shape of the glowing horseshoe seemed strangely familiar to him... Well, poor Georg. While he never did finish that thought, he did publish his well-known treatise on the relationships between voltage, current and resistance (E, I and R respectively) that sadly enough, made him the laughingstock of academia.

But he resisted their taunts and worked hard to prove his colleagues wrong. Twenty-seven years went by before a big-shot at his college proclaimed that he was right! In appreciation for his work, OHM became the universal term for electrical resistance...and for the rest of his life, Georg suffered a bout of *deja vu* every time he passed a blacksmith shop.

Fast forward to 1898. Frederick Baldwin figures out how to regulate the flow of water over calcium carbide to produce acetylene gas. Two years and three apartment explosions later, he finally gets it mostly right. Not yet having earned the Prince of Darkness moniker, 'Smokey Joe' Lucas picks up on the process, improves and patents the best lamps in the business beginning with gas headlights and ending with the legendary Lucas Flamethrowers of rally fame.

Driving at night or in the fog was inevitable. As early as 1908, dissertations were published on the huge socioeconomic impact of headlights on both American and English lifestyles. Once the motoring world became nocturnally mobile, an entirely new economy developed, including second and third shifts, longer working hours for family-owned businesses, higher electric bills and in turn, the need to make more money to pay those bills. Thus, by making all that extra discretionary income, we bought LBCs. And that's how we find ourselves in the 'Skinned Knuckle Garage' - messing about with wires on an old MGB, ruminating on the venerable Mr. Ohm.

Since wire itself, along with all of the connections and switch contacts, has some degree of resistance to the flow of electrons, the bulb is not the only potential 'drain' on the circuit. Without tearing things apart, the internal resistance of the wire, the specified bulb and the sealed door switch contacts are, generally, what they are. However, the bullet connectors can be cleaned of oxides, the metal bayonet and lead tab on the bulb can be scraped and the result will generally lead to a brighter light with less heat.

Why? Because less resistance at the same voltage produces less current, thus less heat. Heat produces greater resistance, which in turn, increases resistance in an endless cycle. Endless, that is, until the power source expires. Moving forward, simple things you can do to see and be seen...

1. Clean up the battery connections. Remove the ground terminal first, then the positive. If you have some old cheap replacement terminals, remove and clean until it is shiny.
2. Use bulb grease (available in a \$1.99 pouch from any car parts store) on every contact.
3. Clean and tighten the grounding bundle under the hood adjacent to the fuse block. Remove the screw holding the half-dozen or so black wires to the inner fender. Scrape the contact area until it is clean and shiny, and polish the eyelets. Wire brush the screw until it is shiny or replace with a new 8x32x1/2".
4. Clean the fuse block. Draw a simple diagram and note that the upper two fuses are joined together so as not to reinstall upside down. Clean the fuse ends and spade terminals with brass wool or fine paper. I use a cheap bent .22 caliber bore brush to clean the fuse cradles. If any of the spade terminals on the fuse block are loose, gently peen its rivet with a small hammer and drift, with the other side of the rivet also backed by a drift.
5. Clean all the visible engine and trunk compartment bullet connectors one at a time. A 0.177 cal bore brush fits the female end of the bullet connectors. If you don't disconnect power, be wary of both brown and purple wires, as they are always hot.
6. Consider a set of headlight relays. That way, you can not only maximize available lighting with any headlights, but can also install a set of the latest 7" headlamps from HELLA with replacement module style bulbs. (HELLA 7" headlamp conversions are available from a number of suppliers at wildly varying prices. 'Google' HELLA 7" conversion... courtesy of Paul Hunt at www.mgb-stuff.org.uk.) - end -

Membership Application Form



SEND THIS FORM AND DUES, IF PAYABLE TO:

MORGAN MOTOR CAR CLUB
P.O. BOX 50392
DALLAS, TX. 75250-0392

NOTE: Changes and additions in bold have been made to this application/registration form.
PLEASE complete this additional information.

ANNUAL DUES \$20.00

DATE: _____

PLEASE COMPLETE ALL THE PERSONAL DATA SECTION AND ANY OTHER PORTIONS, WHICH HAVE NOT PREVIOUSLY BEEN FURNISHED OR WHICH MAY HAVE CHANGED.

PERSONAL DATA

NAME: _____ SPOUSE: _____

ADDRESS: _____

CITY: _____ STATE: _____ ZIP: _____

OCCUPATION: _____ PHONE: H _____ W _____

CELL: _____ EMAIL: _____

CAR DATA

MODEL: (+8, +4, 4/4, +4+, 3 wheeler, etc.) _____ LHD _____

BODY STYLE: (DHC, RDSTR, 4 STR, SS, etc.) _____ RHD _____

YEAR: _____ COLOR: _____ CHASSIS NO. _____

ENGINE TYPE: (TR4, FORD, FIAT, ROVER, JAP, etc.) _____ ENGINE NO. _____

GENERAL DATA

HOW LONG HAVE YOU OWNED YOUR MORGAN? _____

OTHER MMCC MEMBERS THAT YOU KNOW, IF ANY? _____

HOW DID YOU LEARN OF MMCC? _____

LIST ANY OTHER MORGAN CAR CLUB MEMBERSHIPS _____

LIST ANY OTHER NON-MORGAN CAR CLUB MEMBERSHIPS _____

FROM WHOM DID YOU ACQUIRE YOUR MORGAN? _____

(PLEASE ADVISE IF YOU WANT ANY OF THIS INFORMATION DELETED FROM ANY DIRECTORY)

The present MMCC club newsletter, the MOG LOG, is distributed electronically in color. Printed option in black and white sent by U.S. Mail may become available sometime later.